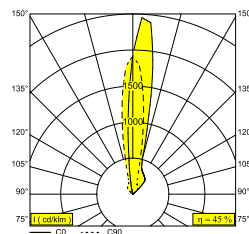
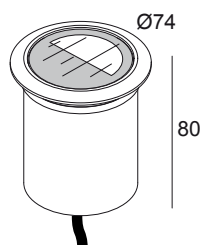
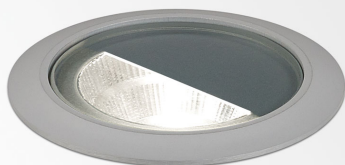


LOGIC 60 R A MOON 24V 93020 ANO

13964 9320 ANO

AVAILABLE IN
ALU ANODIZED 13964 9320 ANO
BLACK 13964 9320 B



[View on website](#)

General info

LOCATION	outdoor
INSTALLATION	Floor Recessed
CUTOUT SHAPE/SIZE (MM)	round - 61
RECESSED DEPTH (MM)	100
INGRESS PROTECTION	IP67
PROTECTION AGAINST MECHANICAL IMPACT	IK08
WEIGHT (KG)	0.5
ADJUSTABILITY	non adjustable
INFORMATION	REFLECTOR FL-20° INCL.1 x CABLE H05 RN-F 2 x 1mm ² 0,5m EXCL.LED POWER SUPPLY 24V-DC (non-dimmable or dimmable with PWM output) IEC 60598-2-13 : max.150kg 25N/cm ² ESG 5mm

Electrical info

ELECTRICAL	24V-DC
CLASS	III
DIM TYPE	non-dimmable
ENERGY CLASS	D
CERTIFICATES	CB, ENEC

Lightsource info

LIGHTSOURCE NAME	LED
LIGHTSOURCE	LED array 5,8W / CRI>90 (R9: 52) / 3000K / 787lm
TM-30 VALUES	rf: 90 / Rg: 99
SDCM	SDCM1
RISKGROUP	RG1
LM80	L90B10 > 50000
LED TECHNICS (LIGHT SOURCE)	787lm // 5,8W // 135lm/W
LED TECHNICS (LUMINAIRE)	353lm // 7W // 53lm/W

Requirements

LED POWER SUPPLY 24V-DC

LOGIC 60 R A MOON 24V 93020 ANO

13964 9320 ANO

Options

LOGIC 60 BOX R

CBOX

IP68 CONNECTION KIT

IP68 CONNECTOR 3P

For detailed installation instructions, please consult the manual: [13964_XXX0_HAND.pdf](#)

LOGIC 60 R A MOON 24V 93020 ANO
13964 9320 ANO

FINISH YOUR SPECIFICATION

LED power supplies #



300 89 24 150 LED POWER SUPPLY 24V-DC / 150W

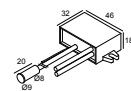
21 ☐



21012 0160 LED POWER SUPPLY 24V-DC / 24W

3 ☐

Miscellaneous control equipment



21032 0320 AMBIENT LIGHT SENSOR AND 24V DIMMER (PWM)

☐

Ground mounting boxes

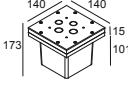
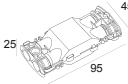
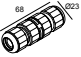


213 19 10 LOGIC 60 BOX R

☐

LOGIC 60 R A MOON 24V 93020 ANO
13964 9320 ANO

Waterproof connection parts

	216 12 00 CBOX	<input type="checkbox"/>
	216 12 01 IP68 CONNECTION KIT	<input type="checkbox"/>
	216 12 02 IP68 CONNECTOR 3P	<input type="checkbox"/>

Notes: